

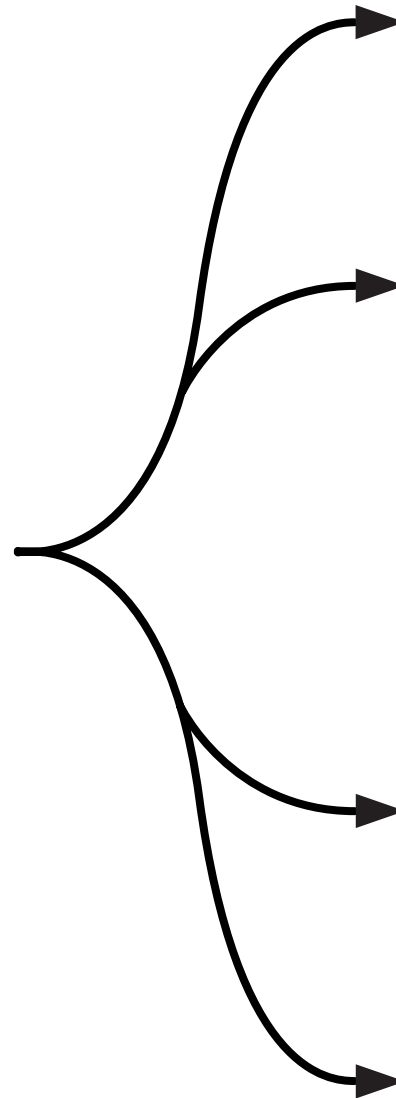
GETTING STARTED

PXI-8212

for Windows

**Please turn
to the correct
section for your
operating system**

**No CD-ROM drive?
Please see back cover for
alternative installation options.**



Windows 95

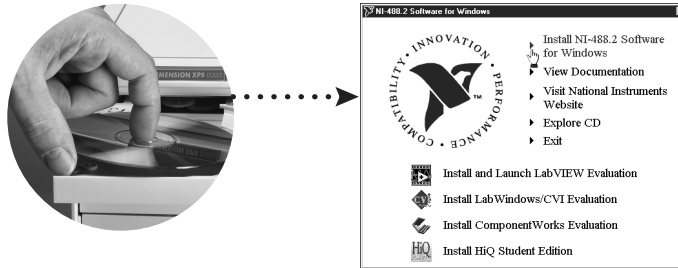
Windows Me/98

Windows 2000

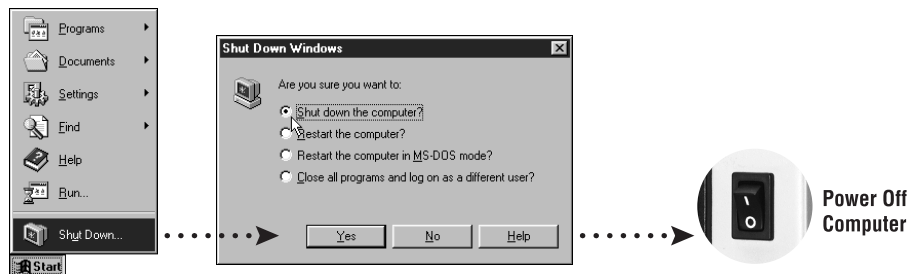
Windows NT 4.0

PXI-8212 for Windows 95

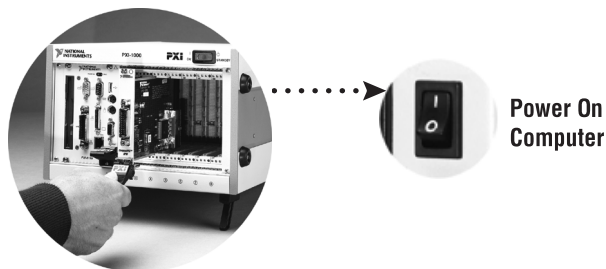
- 1 Insert the NI-488.2 CD, then choose Install NI-488.2 Software for Windows.



- 2 Shut down, then power off computer.



- 3 Install hardware and cables, then power on computer.

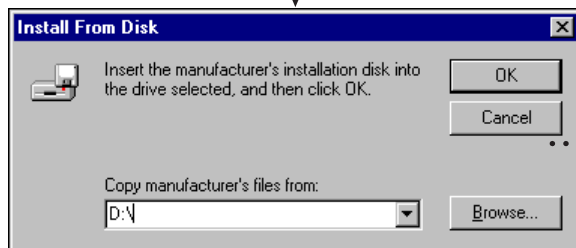
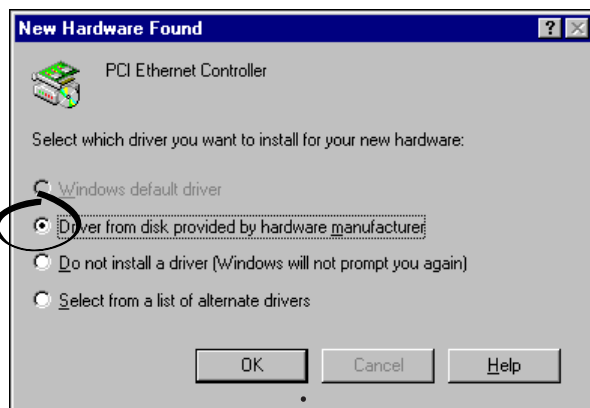


4

Install the Windows 95 Ethernet Driver.

Windows 95 automatically finds the new card. You also may be prompted for the original Windows 95 CD.

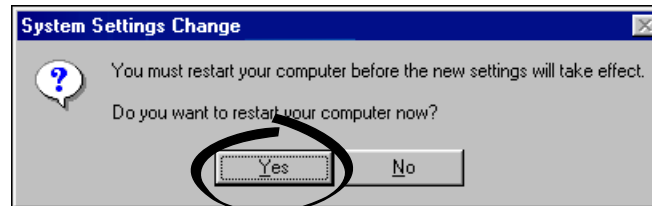
For Help installing your driver, refer to the *PCI/PXI Ethernet Adapters Installation Guide* (available on the PCI/PXI Ethernet Adapters CD). The installation guide also contains cabling instructions and troubleshooting tips.



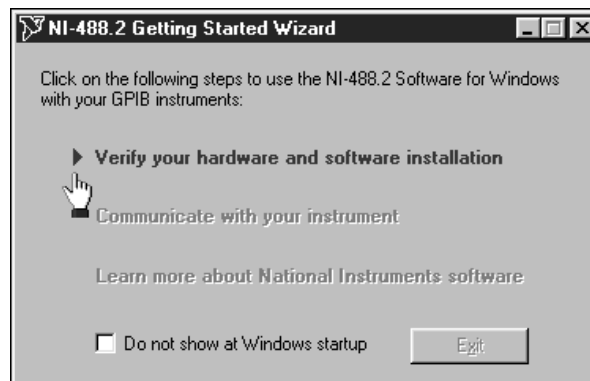
PCI/PXI
Ethernet
Adapters CD

Tip: If you are using a PXI-8170 controller, you can load the Ethernet driver from `C:\images\ethernet`

- 5** Restart computer, then connect to your network.



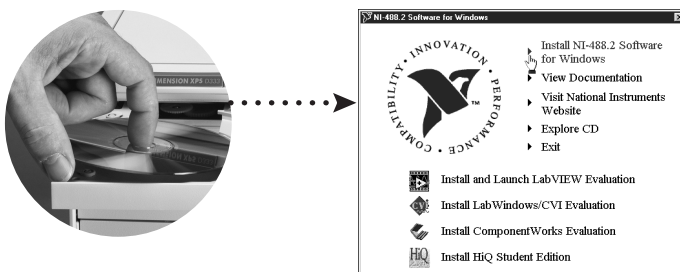
- 6** Run NI-488.2 Getting Started Wizard.



PXI-8212 for Windows Me/98

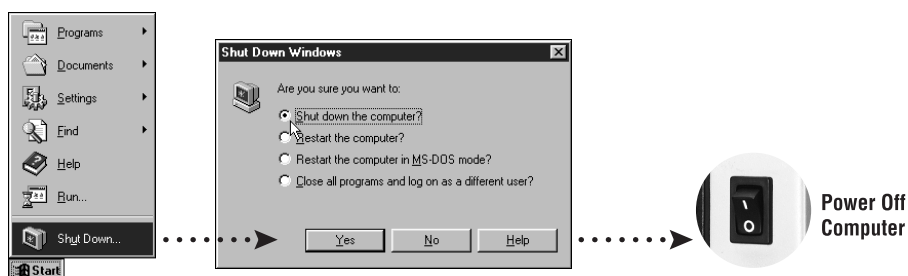
1

Insert the NI-488.2 CD, then choose Install NI-488.2 Software for Windows.



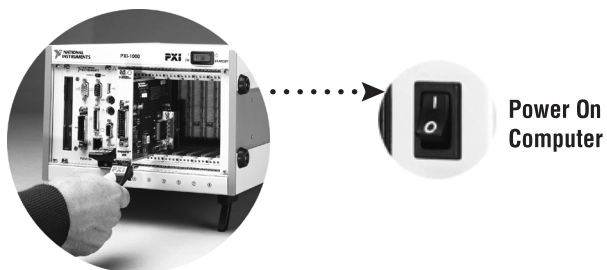
2

Shut down, then power off computer.



3

Install hardware and cables, then power on computer.



Windows Me/98

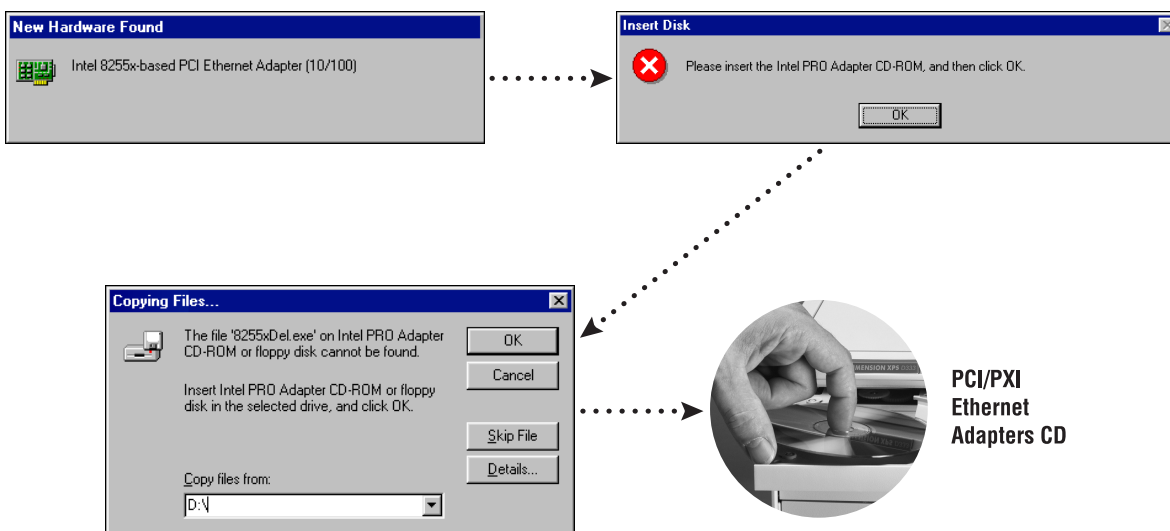
4

Install the Windows Me/98 Ethernet Driver.

Windows Me/98 automatically finds the new card. You also may be prompted for the original Windows Me/98 CD.

For Help installing your driver, refer to the *PCI/PXI Ethernet Adapters Installation Guide* (available on the PCI/PXI Ethernet Adapters CD). The installation guide also contains cabling instructions and troubleshooting tips.

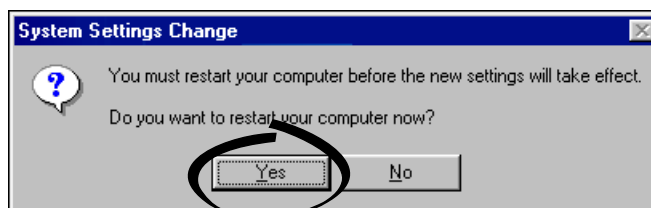
Windows Me/98



Tip: If you are using a PXI-8170 controller, you can load the Ethernet driver from C:\images\ethernet

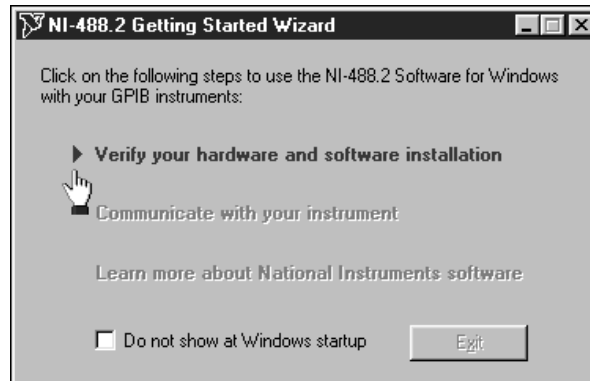
5

Restart computer, then connect to your network.



6

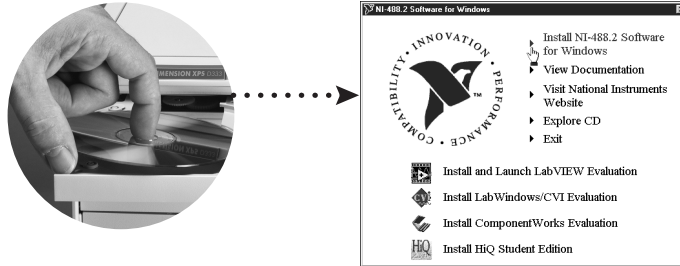
Run NI-488.2 Getting Started Wizard.



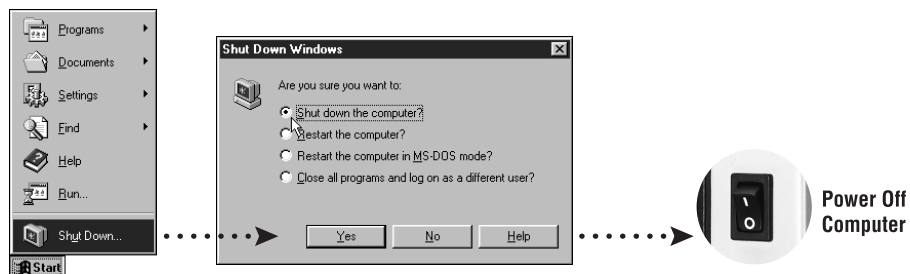
Windows Me/98

PXI-8212 for Windows 2000

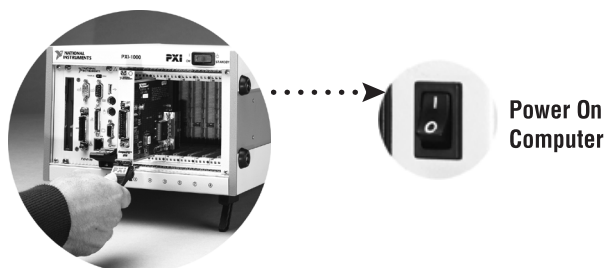
- 1** Insert the NI-488.2 CD, then choose **Install NI-488.2 Software for Windows**.



- 2** Shut down, then power off computer.



- 3** Install hardware and cables, then power on computer.

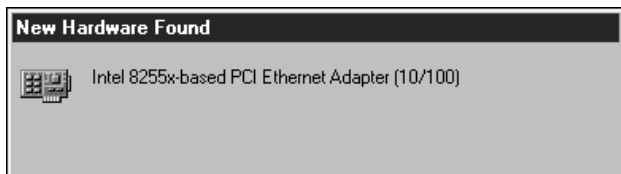


4

Install the Windows 2000 Ethernet Driver.

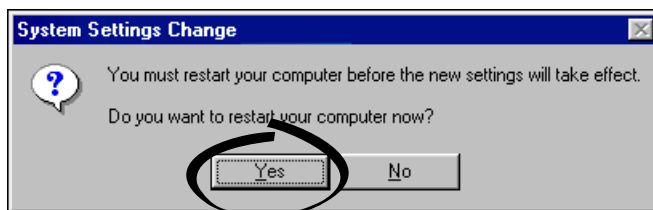
Windows 2000 automatically finds the new card and installs the drivers. You also may be prompted for the original Windows 2000 CD.

For Help installing your driver, refer to the *PCI/PXI Ethernet Adapters Installation Guide* (available on the PCI/PXI Ethernet Adapters CD). The installation guide also contains cabling instructions and troubleshooting tips.



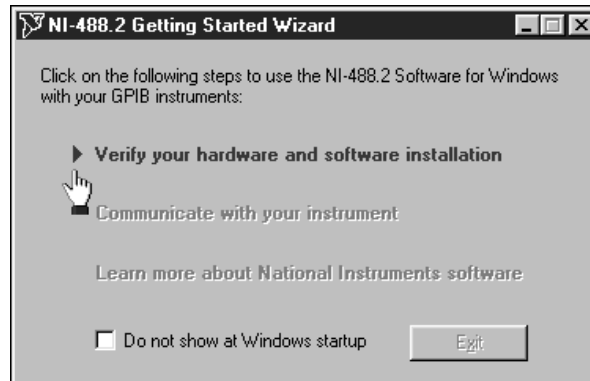
5

Restart computer, then connect to your network.



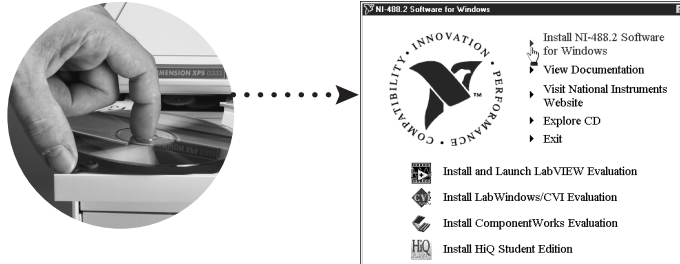
6

Run NI-488.2 Getting Started Wizard.

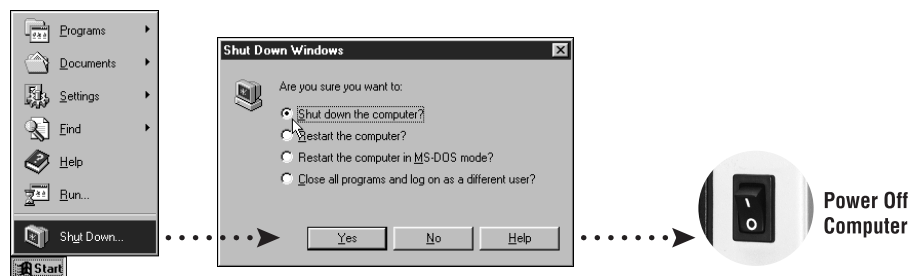


PXI-8212 for Windows NT 4.0

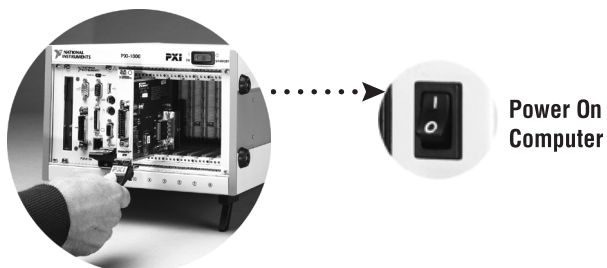
- 1** Insert the NI-488.2 CD, then choose Install NI-488.2 Software for Windows.



- 2** Shut down, then power off computer.



- 3** Install hardware and cables, then power on computer.

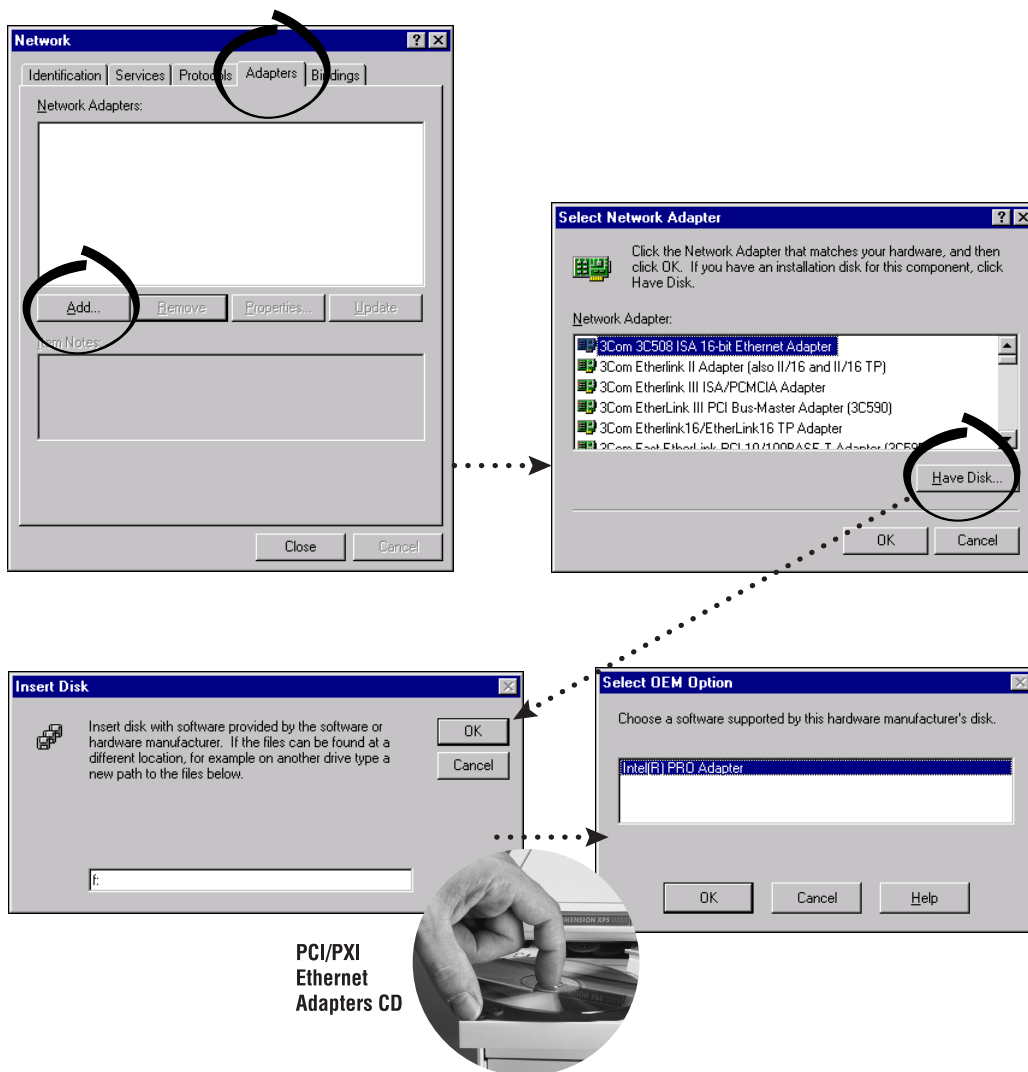


4

Install the Windows NT 4.0 Ethernet Driver.

Select **Start»Settings»Control Panel»Network»Adapters** and click **Add**. Click **Have Disk** and insert the PCI/PXI Ethernet Adapters CD when prompted. You also may be prompted for the original Windows NT CD.

For Help installing your driver, refer to the *PCI/PXI Ethernet Adapters Installation Guide* (available on the PCI/PXI Ethernet Adapters CD). The installation guide also contains cabling instructions and troubleshooting tips.



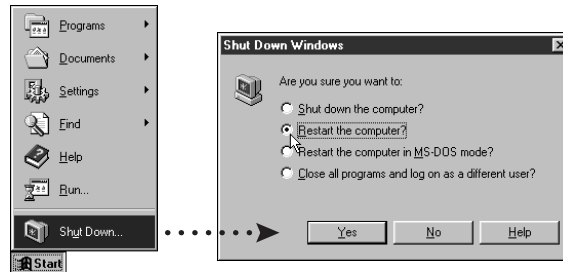
Tip: If you are using a PXI-8170 controller, you can load the Ethernet driver from `C:\images\ethernet`

PXI-8212 for Windows NT 4.0

(Continued)

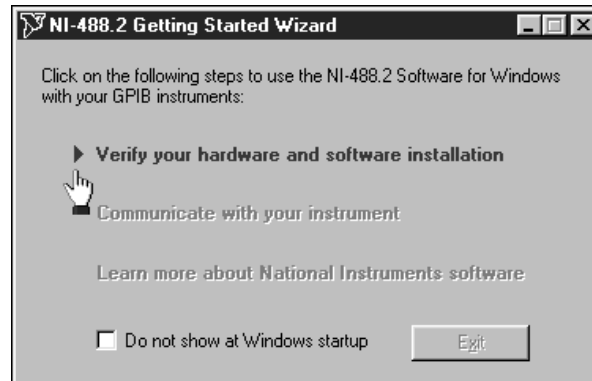
5

Restart computer, then connect to your network.



6

Run NI-488.2 Getting Started Wizard.



Alternative Driver Installation Options for the PXI-8212

The installation instructions illustrated for each operating system in this document are appropriate for most users. However, if your PXI chassis does not contain a CD-ROM drive, try one of the following alternatives to load the GPIB and Ethernet drivers.

- If your PXI chassis is not equipped with a CD-ROM drive, connect an external CD-ROM, such as a USB CD-ROM, and load the GPIB and Ethernet drivers directly from their respective CDs.
- Install the Ethernet driver for the PXI-8212 first, and then download the GPIB driver from the National Instruments web site.
 1. Install the PXI-8212 in your chassis.
 2. At startup, cancel the **Add New Hardware Wizard** that displays it has found a *PCI Communication Device*.
 3. Install the Ethernet driver using any of the other options on this page, as appropriate.
 4. Use the Ethernet connection to download the GPIB driver from the National Instruments web site. Access the **Drivers and Downloads** page at ni.com/download/
- If your PXI chassis contains a National Instruments PXI-8170 controller, the Ethernet driver is already loaded on the hard drive. When the installer prompts you for the location of the driver, you can select `c:\images\ethernet` instead of the CD-ROM. In fact, you may choose this option even if you do have an internal or external CD-ROM.
- If you have an existing Ethernet connection in your PXI chassis, download the Intel Ethernet driver from the National Instruments web site. Access the **Drivers and Downloads** page at ni.com/download/
- Use another computer that has a CD-ROM to copy the Ethernet driver onto a 3.5 in. floppy disk.
 1. Open a DOS command window.
 2. Change to the \MAKEDISK directory on the CD-ROM.
 3. Type: `MAKEDISK [operating system] [destination (optional; A: if not specified)]` where `[operating system]` is the OS family you want to use with the diskette.
 - W2K = Microsoft Windows 2000
 - NT = Microsoft Windows NT
 - W9X = Microsoft Windows Me/98/95
 - NW = Novell NetWare servers and clients
 - DOS = Microsoft DOS and IBM OS/2



ni.com/support
ni.com/ask

