

CALIBRATION PROCEDURE

PXIe-5650/5651/5652

This document describes the processes to calibrate the PXIe-5650/5651/5652 RF signal generator. This document provides performance tests to verify whether the instrument is performing within the published specifications. For more information about calibration, visit ni.com/calibration.

Contents

Required Software	2
Related Documentation	2
Password.....	2
Calibration Interval.....	2
Test Equipment.....	3
Test Conditions.....	5
Calibration Procedures	5
Initial Setup.....	6
Characterizing the Test System	6
Characterizing the Spectrum Analyzer	6
Verification	8
Validating the ALC Limits Table.....	8
Verifying Frequency Accuracy	9
Verifying High Power Level Accuracy	9
Verifying Low Power Level Accuracy.....	11
Verifying Single Sideband Phase Noise at 10 kHz Offset	14
Verifying Harmonics at 0 dBm	15
Verifying Harmonics at -40 dBm	17
Verifying Subharmonics on the PXIe-5652 at 0 dBm.....	19
Verifying Subharmonics on the PXIe-5652 at -40 dBm	21
Verifying Nonharmonics at 0 dBm to -20 dBm Output Power	22
Adjustment.....	26
Adjusting ALC	26
Adjusting Attenuators.....	27
Adjusting ALC Limits	28
Adjusting Frequency Accuracy	29
Updating Calibration Date and Time.....	29
Appendix A: Calibration Utilities.....	30
Calibration VI References	30
NI Services	30



Required Software

To calibrate the PXIe-5650/5651/5652, you must install NI-RFSG version 15.0.3 or later on the calibration system. NI-RFSG includes all the VIs necessary for calibration. You can download the latest version of NI-RFSG at ni.com/downloads.

NI-RFSG supports programming the calibration procedures in LabVIEW. Calibration VIs are accessible in LabVIEW from the Functions palette. Refer to Table 1 for file locations.

For more information about calibration VIs, refer to the *NI RF Signal Generators Help*, accessible at **Start»All Programs»National Instruments»NI-RFSG»Documentation»NI RF Signal Generators Help**.

Table 1. Calibration File Locations

File Name and Location	Description
<IVI>\bin\niRFSG.dll	NI-RFSG driver containing the entire NI-RFSG API, including calibration functions.
<LabVIEW>\instr.lib\niRFSG\niRFSG5652calibration	Folder containing NI-RFSG calibration VIs. You can access calibration VIs from the NI-RFSG calibration section of the LabVIEW Functions palette.

Related Documentation

You might find the following documentation helpful as you perform the verification procedures:

- Specifications for your device
- *NI PXIe-5650/5651/5652 Getting Started Guide*
- *NI RF Signal Generators Help*

The latest versions of these documents are available on ni.com/manuals.

Password

The default password for password-protected operations is NI.

Calibration Interval

The measurement accuracy requirements of your application determine how often you should calibrate your device. NI recommends that you perform a complete calibration for the PXIe-5650/5651/5652 at least once a year. You can shorten this calibration interval based on the accuracy demands of your application.

Test Equipment

Table 2 lists the equipment required to calibrate the PXIe-5650/5651/5652. If you do not have the recommended equipment, select a substitute calibration standard using the specifications listed in Table 2.

Table 2. Required Equipment Specifications for PXIe-5650/5651/5652 Calibration

Required Equipment	Recommended Model	Where Used	Minimum Requirements
Spectrum analyzer	Rohde & Schwarz (R&S) FSU Spectrum Analyzer with Preamplifier (option B23 and B25)	Characterizing the spectrum analyzer Frequency accuracy Low power level accuracy Single sideband phase noise Harmonics Subharmonics Nonharmonics	Frequency range: 500 kHz to 13.2 GHz Noise floor: <-150 dBm/Hz
6 dB precision attenuator	Anritsu 41KB-6	Characterizing the spectrum analyzer Frequency accuracy Low power level accuracy Single sideband phase noise Harmonics Subharmonics Nonharmonics	Frequency range: 500 kHz to 6.6 GHz Power rating: 2 W Impedance: 50 Ω VSWR: ≤1.1:1

Table 2. Required Equipment Specifications for PXIe-5650/5651/5652 Calibration (Continued)

Required Equipment	Recommended Model	Where Used	Minimum Requirements
Power meter	Anritsu ML2438A with an Anritsu SC7400 thermal sensor	Characterizing the spectrum analyzer High power level accuracy	Range: -55 dBm to 20 dBm Frequency range: 100 kHz to 18 GHz
Frequency reference	Symmetricon 8040C Rubidium Frequency Standard	Characterizing the spectrum analyzer Frequency accuracy High power level accuracy Low power level accuracy Single sideband phase noise Harmonics Subharmonics Nonharmonics	Frequency: 10 MHz Frequency accuracy: $\leq \pm 1E-9$
BNC (m)-to-BNC (m) cable	Pomona 5697	—	—
SMA (m)-to-BNC (m) cable	Pasterneck Enterprises PE3696-36	—	—
SMA (m)-to-SMA (m) cable	MegaPhase G916-S1S1-36	—	Frequency range: DC to 6.6 GHz Insertion loss: ≤ 1.2 dB up to 6.6 GHz Impedance: 50 Ω VSWR: ≤ 1.25 : 1 up to 6.6 GHz

Table 2. Required Equipment Specifications for PXIe-5650/5651/5652 Calibration (Continued)

Required Equipment	Recommended Model	Where Used	Minimum Requirements
N (m)-to-SMA (f) adapter	Radiall R191.329.000	—	Frequency range: DC to 11 GHz Impedance: 50 Ω
PXI Express chassis	PXIe-1065 or PXIe-1075	—	—

Test Conditions

The following setup and environmental conditions are required to ensure the PXIe-5650/5651/5652 meets published specifications.

- Keep cabling as short as possible. Long cables and wires act as antennas, picking up extra noise that can affect measurements.
- Verify that all connections, including front panel connections and screws, are secure.
- Ensure that the PXI Express chassis fan speed is set to HIGH, that the fan filters, if present, are clean, and that the empty slots contain filler panels. For more information about cooling, refer to the *Maintain Forced-Air Cooling Note to Users* document available at ni.com/manuals.
- Keep relative humidity between 10% and 90%, noncondensing.
- Maintain an ambient temperature of 23 °C ±5 °C.
- Allow a warm-up time of at least 30 minutes after the chassis is powered on. The warm-up time ensures that the PXIe-5650/5651/5652 is at a stable operating temperature.
- In each verification procedure, insert a delay between configuring all devices and acquiring the measurement. This delay may need to be adjusted depending on the instruments used but should always be at least 1,000 ms for the first iteration and 100 ms for each subsequent frequency iteration.

Calibration Procedures

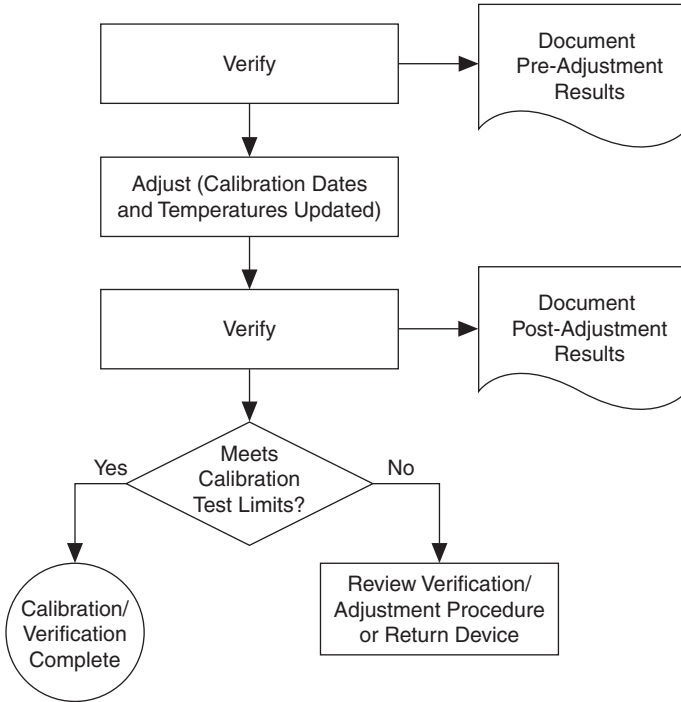
The calibration process includes the following steps:

1. **Initial Setup**—Install the device and configure it in Measurement & Automation Explorer (MAX).
2. **Verification**—Verify the existing operation of the device. This step confirms whether the device is operating within its specified range prior to adjustment.
3. **Adjustment**—Perform an external adjustment of the device that adjusts the calibration constants of the device.
4. **Reverification**—Repeat the verification procedure to ensure that the device is operating within its specifications after adjustment.

Perform a complete calibration to guarantee successful adjustment and performance of the PXIe-5650/5651/5652 for a one-year calibration interval.

Figure 1 shows the programming flow for a complete calibration.

Figure 1. Complete Calibration Programming Flow



Initial Setup

Refer to the *NI PXIe-5650/5651/5652 Getting Started Guide* for information about how to install the software and hardware and how to configure the device in MAX.

Characterizing the Test System

The following procedures characterize the test equipment used during verification and adjustment.



Note The connectors on the device under test (DUT) and test equipment are fragile. Carefully perform the steps in these procedures to prevent damaging any DUTs or test equipment.

Characterizing the Spectrum Analyzer

Complete the following steps to characterize the spectrum analyzer:

1. Connect the PXIe-5650/5651/5652 REF IN/OUT front panel connector to the rubidium 10 MHz frequency reference signal using the SMA (m)-to-BNC (m) cable.
2. Connect the PXIe-5650/5651/5652 RF OUT front panel connector to the power meter thermal sensor.
3. Call the niRFSG 5652 Get Calibration Frequencies.vi located in the `labview\instr.lib\niRFSG\niRFSG5652Calibration\SubVIs` directory. In the **Calibration procedure** control, specify **Attenuators**, and in the **Model** control, specify the device model name as NI PXIe-5650, NI PXIe-5651, or NI PXIe-5652. A frequency array is generated.
4. Build another frequency array for the appropriate device model using the frequencies listed in Table 5, *Low-Level Accuracy Test Points and Limits (≤ -40 dBm)*.
5. Concatenate the frequency arrays from step 3 and step 4. Pass the result into the niRFSG Sort Array and Remove Duplicates (DBL).vi located in the `labview\instr.lib\niRFSG\commonCalibration` directory. Record the resulting list of frequencies that is generated.
6. Generate a signal at -35 dBm, and measure the power at all of the frequency test points recorded in step 5.
7. Connect the rubidium 10 MHz frequency reference signal to the spectrum analyzer REF IN rear panel connector.
8. Connect the 6 dB precision attenuator to the PXIe-5650/5651/5652 RF OUT front panel connector.
9. Connect the spectrum analyzer RF INPUT connector to the 6 dB precision attenuator using the SMA (m)-to-SMA (m) cable.
10. Generate a single-tone signal after setting the following NI-RFSG property settings:
 - Frequency (Hz): 500 kHz
 - Power Level (dBm): -35 dBm
 - Generation Mode: CW
 - Reference Clock source: RefIn
11. Use the spectrum analyzer to measure the mean power of the RF output using the following spectrum analyzer settings:
 - Frequency: NI-RFSG frequency (Hz) value obtained in step 10
 - Reference level: -38 dBm
 - Resolution bandwidth: 30 Hz
 - Frequency span: 0 Hz
 - Reference Clock source: External
 - Trace averaging: 20 averages
12. Repeat step 11 for each of the frequencies in the array that you recorded in step 5.
13. Calculate the *Spectrum Analyzer Correction Factor* by subtracting each measurement in step 11 from the corresponding measurement in step 6 at the same frequency. Record the result.



Tip The numbers will be positive if the subtraction is performed correctly.



Note Do not disconnect the attenuator or any cables from your signal analyzer following characterization. You must use the same configuration in the following verification and adjustment procedures.

Verification

This section describes the steps you must follow to verify the published specifications for the PXIe-5650/5651/5652.

Verification includes the following functional test:

- ALC limits table validation

Verification tests the following PXIe-5650/5651/5652 specifications:

- Frequency accuracy
- High power level accuracy
- Low power level accuracy
- Single sideband phase noise at 10 kHz offset
- Harmonics at an RF output level from -40 dBm to 0 dBm
- Subharmonics at an RF output level from -40 dBm to 0 dBm
- Nonharmonics at less than or equal to an RF output level of 0 dBm (>3 kHz and >100 kHz offsets)

Verification of the PXIe-5650/5651/5652 is complete only after you have successfully completed all tests in this section.

Validating the ALC Limits Table

Complete the following steps to validate the ALC limits table on the device EEPROM:

1. Call the niRFSG Initialize External Calibration VI.
2. Call the niRFSG 5652 Validate ALC Limits Table VI.



Note Any invalid ALC limits are reported in the **invalid limits** indicator. If this array is non-empty, adjust the device. If invalid limits persist after adjustment, the device specifications are not warranted over temperature at the specified **invalid limits** frequencies, and the device requires repair.



Note If the **ALC poly range data present?** parameter is FALSE, adjust the device. The ALC limits table is validated using calibration data on the device and does not require any external measurements. ALC poly range data was added to the device EEPROM in NI-RFSG 15.0.3. This data is required to validate the ALC limits table. If the device was last adjusted using a version of NI-RFSG prior to NI-RFSG 15.0.3, the ALC limits table cannot be validated. The PXIe-5652 may be used as an LO for the NI PXIe-5663 or NI PXIe-5673 in this case. When using the

PXIE-5650/5651/5652 as a stand-alone device, NI recommends adjusting the device using NI-RFSG 15.0.3 or later.

3. Call the niRFSG Close External Calibration VI to close the session. Set the **write calibration to hardware?** parameter to FALSE.

Verifying Frequency Accuracy

Complete the following steps to verify the frequency accuracy of the PXIE-5650/5651/5652 module using a spectrum analyzer:

1. Connect the rubidium 10 MHz frequency reference signal to the spectrum analyzer REF IN rear panel connector.
2. Configure the spectrum analyzer with the following settings:
 - Center frequency: 400 MHz
 - Reference level: -20 dBm
 - Resolution bandwidth: 100 Hz
 - Span: 100 kHz
 - Reference Clock source: External
 - Frequency counter resolution: 1 Hz
3. Generate a signal after setting the following NI-RFSG property settings:
 - Frequency (Hz): 400 MHz
 - Power Level (dBm): -20 dBm
 - Generation Mode: CW
 - Reference Clock source: Onboard Clock
4. Use the spectrum analyzer to measure the frequency of the peak tone.
5. Verify that the measurement in step 4 is within the limits in Table 3, with respect to 400 MHz.

Table 3. Frequency Accuracy Test Limit

Device	Test Limit
PXIE-5650/5651/5652	9 ppm

Verifying High Power Level Accuracy

Complete the following steps to verify the high power level accuracy of the PXIE-5650/5651/5652 module using a power meter:

1. Connect the PXIE-5650/5651/5652 REF IN/OUT front panel connector to the rubidium 10 MHz frequency reference signal.
2. Connect the PXIE-5650/5651/5652 RF OUT front panel connector to the power meter thermal sensor.
3. Generate a single-tone signal after setting the following NI-RFSG property settings:
 - Frequency (Hz): 500 kHz

- Power Level (dBm): 5 dBm
 - Generation Mode: CW
 - Reference Clock source: RefIn
4. Use the power meter to measure the RF OUT power. Compare the measured RF OUT power to the *Test Limit* listed in Table 4.

Table 4. High Power Level Accuracy Test Points and Limits

Device	Frequency	Start Power (dBm)	Test Limit (dB)	
PXIe-5650/5651/5652	500 kHz	5	±1.6	
	1 MHz	5		
	2 MHz	5		
	5 MHz	5		
	PXIe-5651/5652	10 MHz	8	±0.75
		20 MHz	8	
		50 MHz	10	
		100 MHz	10	
		150 MHz	10	
		200 MHz	10	
		500 MHz	10	
		1 GHz	10	
		PXIe-5651	1.5 GHz	
2 GHz	8			
2.5 GHz	8			
3 GHz	8			
PXIe-5651	3.3 GHz	7		

Table 4. High Power Level Accuracy Test Points and Limits (Continued)

Device	Frequency	Start Power (dBm)	Test Limit (dB)
PXIe-5652	3.3 GHz	7	±1.0
	3.5 GHz	7	
	4 GHz	5	
	4.5 GHz	5	
	5 GHz	0	
	5.5 GHz	0	
	6 GHz	0	
	6.6 GHz	0	

- Repeat steps 3 through 4 for every power level down to -38 dBm, using a step size of 2 dB on the even values (5, 4, 2, 0, ..., -38).
- Repeat step 5 for the remaining frequencies using the corresponding *Start Power* listed in Table 4.

Verifying Low Power Level Accuracy



Note Prior to starting this procedure, characterize the spectrum analyzer according to the [Characterizing the Spectrum Analyzer](#) section of this document.

Complete the following steps to verify the low power level accuracy (≤ -40 dBm) of the PXIe-5650/5651/5652 module using a spectrum analyzer:

- Connect the PXIe-5650/5651/5652 REF IN/OUT front panel connector to the rubidium 10 MHz frequency reference signal.
- Connect the rubidium 10 MHz frequency reference signal to the spectrum analyzer 10 MHz REF IN rear panel connector.
- Generate a single-tone signal after setting the following NI-RFSG property settings:
 - Frequency (Hz): 500 kHz
 - Power Level (dBm): -40 dBm
 - Generation Mode: CW
 - Reference Clock source: RefIn
- Use the NI-RFSG Property Node to read the actual frequency of the generated signal. The actual frequency varies slightly from the configured frequency.
- Configure the spectrum analyzer with the following settings:
 - Frequency: NI-RFSG frequency (Hz) value obtained in step 4
 - Reference level: -44 dBm

- Resolution bandwidth: 30 Hz
 - Frequency span: 0 Hz
 - Reference Clock source: External
 - Trace averaging: 20 traces
6. Use the spectrum analyzer to measure the PXIe-5650/5651/5652 RF OUT power. Add the *Spectrum Analyzer Correction Factor* recorded in the [Characterizing the Spectrum Analyzer](#) section to each power measurement in this step at the corresponding frequency. Compare the value to the *Test Limit* listed in Table 5.

Table 5. Low-Level Accuracy Test Points and Limits (≤ -40 dBm)

Device	Frequency	Stop Power (dBm)	Test Limit (dB)		
PXIe-5650/5651/5652	500 kHz	-90	± 2.2		
	1 MHz	-90			
	2 MHz	-90			
	5 MHz	-90			
	PXIe-5651/5652	10.1 MHz	-90	± 1.8	
		20.1 MHz	-90		
		50.1 MHz	-90		
		100.1 MHz	-90		
		150.1 MHz	-90		
		200.1 MHz	-90		
		500.1 MHz	-90		
		1 GHz	-90		
PXIe-5651		1.5 GHz	-90		± 1.8
		2 GHz	-80		
	2.5 GHz	-80			
	3 GHz	-70			
PXIe-5651	3.3 GHz	-60	± 2.0		
PXIe-5652	3.3 GHz	-60			
	3.5 GHz	-60			
	4 GHz	-50			
	4.5 GHz	-50			
	5 GHz	-50			
	5.5 GHz	-50			
	6 GHz	-50			
6.6 GHz	-50				

7. Repeat steps 3 through 6 for every power level down to the *Stop Power* listed in Table 5, using a step size of 5 dB.
8. Repeat steps 3 through 7 for the remaining frequencies listed in Table 5.

Verifying Single Sideband Phase Noise at 10 kHz Offset

Complete the following steps to verify the single sideband (SSB) phase noise of an PXIe-5650/5651/5652 module using a spectrum analyzer:

1. Connect the PXIe-5650/5651/5652 REF IN/OUT front panel connector to the rubidium 10 MHz frequency reference signal.
2. Connect the rubidium 10 MHz frequency reference signal to the spectrum analyzer 10 MHz REF IN rear panel connector.
3. Generate a signal after setting the following NI-RFSG property settings:
 - Frequency: 500 MHz
 - Power Level: 0 dBm
 - Generation Mode: CW
 - Reference Clock source: RefIn
4. Configure the spectrum analyzer with the following settings:
 - Frequency: 500 MHz
 - Reference level: 0 dBm
 - Resolution bandwidth: 10 Hz
 - Frequency span: 100 Hz
 - Reference Clock source: External
 - Level range: Log 120 dB
5. Measure the maximum power within the configured span of the spectrum analyzer and record this data. Reference this measurement for steps 6 through 11.
6. Reconfigure the spectrum analyzer with the following settings:
 - Frequency: 500 MHz + 10 kHz offset
 - Reference level: Value measured in step 5
 - Resolution bandwidth: 10 Hz
 - Frequency span: 100 Hz
 - Reference Clock source: External
 - Level range: Log 120 dB
 - Trace averaging: 20 traces
7. Measure the mean value within the configured span of the spectrum analyzer and record this value.
8. Apply the following equation to the value measured in step 7:

$$\text{phase noise}_{SSB} \text{ at } 10 \text{ kHz offset} = \text{Measurement} - 10\log(RBW)$$

where

Measurement = value measured in step 7

RBW = resolution bandwidth

- Subtract the measurement recorded in step 5 from the value calculated in step 8.
- Verify that the value calculated in step 9 meets the *Test Limits* as specified in Table 6.
- Repeat steps 3 through 10 for the remaining frequencies listed in the *Frequency* column in Table 6, if applicable to the device.

Table 6. Single Sideband Phase Noise at 10 kHz Offset

Device	Frequency	Test Limit(dBc/Hz)
PXIe-5650/5651/5652	500 MHz	<-111
	1 GHz	<-105
PXIe-5651/5652	2 GHz	<-98
	3 GHz	<-95
PXIe-5652	4 GHz	<-93
	5 GHz	<-90
	6.6 GHz	<-90



Note The main frequency synthesis occurs between 1.6 GHz and 3.3 GHz using one of four voltage-controlled oscillators (VCO). Frequencies outside this range are generated by using dividers or multipliers. For frequencies lower than 1 GHz, the SSB phase noise can be characterized by the following relationship (use the 1 GHz measurement as your reference):

$$SSB \text{ Phase Noise}_{TEST} = SSB \text{ Phase Noise}_{REFERENCE} - 20\log(n)$$

where

$SSB \text{ Phase Noise}_{TEST}$ = SSB phase noise at the center frequency of interest in dBc/Hz

$SSB \text{ Phase Noise}_{REFERENCE}$ = SSB phase noise at the referenced center frequency of interest in dBc/Hz

$n = Reference/Test$ in Hz/Hz

Verifying Harmonics at 0 dBm

Complete the following steps to verify the harmonic levels of the PXIe-5650/5651/5652 module using a spectrum analyzer:

- Connect the PXIe-5650/5651/5652 REF IN/OUT front panel connector to the rubidium 10 MHz frequency reference signal.
- Connect the rubidium 10 MHz frequency reference signal to the spectrum analyzer 10 MHz REF IN rear panel connector.
- Configure the spectrum analyzer with the following settings:

- Center frequency: 10 MHz
 - Reference level: +5 dBm
 - Resolution bandwidth: 1 kHz
 - Frequency span: 500 kHz
 - Reference Clock source: External
4. Generate a signal after setting the following NI-RFSG property settings:
 - Power Level (dBm): 0 dBm
 - Frequency (Hz): 10 MHz
 - Generation Mode: CW
 - Reference Clock source: RefIn
 5. Measure the peak signal value of the fundamental frequency using the current settings on the spectrum analyzer. Record this value.
 6. Reconfigure the spectrum analyzer with the following settings:
 - Center frequency: Twice the center frequency from step 3
 - Reference level: +5 dBm
 - Resolution bandwidth: 1 kHz
 - Frequency span: 500 kHz
 - Reference Clock source: External
 7. Measure the peak signal value of the second harmonic using the settings of the spectrum analyzer configured in step 6. Record this value.
 8. Subtract the measurement in step 5 from the measurement in step 7.
 9. Verify that the result calculated in step 8 meets the *Test Limit* of the maximum difference from the generated signal power (dBc) as shown in Table 7.

Table 7. Harmonics at 0 dBm Output Power

Device	Frequency	Test Limit (dBc)
PXIe-5650/5651/5652	10 MHz	<-24
	20 MHz	
	50 MHz	
	100 MHz	
	150 MHz	
	200 MHz	
	400 MHz	
	800 MHz	
	1.0 GHz	

Table 7. Harmonics at 0 dBm Output Power (Continued)

Device	Frequency	Test Limit (dBc)
PXIe-5651/5652	1.6 GHz	<-24
	2.0 GHz	
	2.5 GHz	
	3.0 GHz	
	3.3 GHz	
PXIe-5652	3.5 GHz	<-24
	3.7 GHz	<-28
	4.0 GHz	
	4.5 GHz	
	5.0 GHz	
	5.5 GHz	
	6.0 GHz	
	6.6 GHz	

10. Repeat steps 3 through 8 for the remaining frequency points shown in Table 7.

Verifying Harmonics at -40 dBm

Complete the following steps to verify the harmonic levels of the PXIe-5650/5651/5652 module using a spectrum analyzer:

1. Connect the PXIe-5650/5651/5652 REF IN/OUT front panel connector to the rubidium 10 MHz frequency reference signal.
2. Connect the rubidium 10 MHz frequency reference signal to the spectrum analyzer 10 MHz REF IN rear panel connector.
3. Configure the spectrum analyzer with the following settings:
 - Center frequency: 10 MHz
 - Reference level: -45 dBm
 - Resolution bandwidth: 50 Hz
 - Frequency span: 500 Hz
 - Reference Clock source: External
4. Generate a signal after setting the following NI-RFSG property settings:
 - Power Level (dBm): -40 dBm
 - Frequency (Hz): 10 MHz

- Generation Mode: CW
 - Reference Clock source: RefIn
5. Measure the peak signal value of the fundamental frequency using the current settings on the spectrum analyzer. Record this value.
 6. Reconfigure the spectrum analyzer with the following settings:
 - Center frequency: Twice the center frequency from step 3
 - Reference level: -45 dBm
 - Resolution bandwidth: 50 Hz
 - Frequency span: 500 Hz
 - Reference Clock source: External
 7. Measure the peak signal value of the second harmonic using the settings of the spectrum analyzer configured in step 6. Record this value.
 8. Subtract the measurement in step 5 from the measurement in step 7.
 9. Verify that the result calculated in step 8 meets the *Test Limit* of the maximum difference from the generated signal power (dBc) as shown in Table 8.

Table 8. Harmonics at -40 dBm Output Power

Device	Frequency	Test Limit (dBc)
PXIe-5650/5651/5652	10 MHz	<-24
	20 MHz	
	50 MHz	
	100 MHz	
	150 MHz	
	200 MHz	
	400 MHz	
	800 MHz	
	1.0 GHz	
PXIe-5651/5652	1.6 GHz	<-24
	2.0 GHz	
	2.5 GHz	
	3.0 GHz	
	3.3 GHz	

Table 8. Harmonics at -40 dBm Output Power

Device	Frequency	Test Limit (dBc)
PXIe-5652	3.5 GHz	<-24
	3.7 GHz	<-28
	4.0 GHz	
	4.5 GHz	
	5.0 GHz	
	5.5 GHz	
	6.0 GHz	
	6.6 GHz	

10. Repeat steps 3 through 8 for the remaining frequency points shown in Table 8.

Verifying Subharmonics on the PXIe-5652 at 0 dBm

Complete the following steps to verify the subharmonic levels of an PXIe-5652 RF signal generator using a spectrum analyzer:

This verification is valid *only* for the PXIe-5652 RF signal generator.

1. Connect the PXIe-5652 REF IN/OUT front panel connector to the rubidium 10 MHz frequency reference signal.
2. Connect the rubidium 10 MHz frequency reference signal to the spectrum analyzer 10 MHz REF IN rear panel connector.
3. Configure the spectrum analyzer with the following settings:
 - Center frequency: 3.3 GHz
 - Reference level: +5 dBm
 - Resolution bandwidth: 1 kHz
 - Span: 500 kHz
 - Reference Clock source: External
4. Generate a single-sideband signal after setting the following NI-RFSG properties:
 - Frequency (Hz): 3.3 GHz
 - Power Level (dBm): 0 dBm
 - Generation Mode: CW
 - Reference Clock source: RefIn
5. Measure the peak power of the fundamental tone using the spectrum analyzer and record the value.
6. Reconfigure the spectrum analyzer with the following settings:
 - Center frequency: Half the frequency used in step 3
 - Reference level: +5 dBm

- Resolution bandwidth: 1 kHz
 - Span: 500 kHz
 - Reference Clock source: External
7. Measure the peak power of the half harmonic and the 1.5x harmonics using the spectrum analyzer with the settings from step 6 and record the values.
 8. Subtract the measurement in step 5 from the measurements in step 7.
 9. Verify that the measured signal powers in step 8 are within the *Test Limit* specified in Table 9.

Table 9. PX1e-5652 Subharmonics at 0 dBm Output Power

Center Frequency (GHz)	Subharmonic (0.5x) Frequency (GHz)	Subharmonic (0.5x) Test Limit (dBc)	Subharmonic (1.5x) Frequency (GHz)	Subharmonic (1.5x) Test Limit (dBc)	
3.31	1.655	<-30	4.965	<-20	
3.5	1.75		5.25		
3.7	1.85		5.55		
3.9	1.95		5.85		
4.1	2.05		6.15		
4.2	2.10	<-24	6.30	<-23	
4.5	2.25		6.75		
4.7	2.35		7.05		
4.9	2.45		7.35		
5.1	2.55		7.65		
5.3	2.65		7.80		<-30
5.5	2.75		8.25		
5.7	2.85		8.55		
5.9	2.95		8.85		
6.1	3.05		9.15		
6.3	3.15	9.45			
6.5	3.25	9.75			
6.6	3.30	9.90			

10. Repeat steps 3 through 9 for the remaining frequencies in Table 9.

Verifying Subharmonics on the PXIe-5652 at -40 dBm

Complete the following steps to verify the subharmonic levels of an PXIe-5652 RF signal generator using a spectrum analyzer:

This verification is valid *only* for the PXIe-5652 RF signal generator.

1. Connect the PXIe-5652 REF IN/OUT front panel connector to the rubidium 10 MHz frequency reference signal.
2. Connect the rubidium 10 MHz frequency reference signal to the spectrum analyzer 10 MHz REF IN rear panel connector.
3. Configure the spectrum analyzer with the following settings:
 - Center frequency: 3.3 GHz
 - Reference level: -45 dBm
 - Resolution bandwidth: 50 Hz
 - Span: 500 Hz
 - Reference Clock source: External
4. Generate a single-sideband signal after setting the following NI-RFSG properties:
 - Frequency (Hz): 3.3 GHz
 - Power Level (dBm): -40 dBm
 - Generation Mode: CW
 - Reference Clock source: RefIn
5. Measure the peak power of the fundamental tone using the spectrum analyzer and record the value.
6. Reconfigure the spectrum analyzer with the following settings:
 - Center frequency: Half the frequency used in step 3
 - Reference level: -45 dBm
 - Resolution bandwidth: 50 Hz
 - Span: 500 Hz
 - Reference Clock source: External
7. Measure the peak power of the half harmonic and the 1.5x harmonics using the spectrum analyzer with the settings from step 6 and record the value.
8. Subtract the measurement in step 5 from the measurements in step 7.
9. Verify that the measured signal powers in step 8 are within the *Test Limit* specified in Table 10.

Table 10. PXIe-5652 Subharmonics at -40 dBm Output Power

Center Frequency (GHz)	Subharmonic (0.5x) Frequency (GHz)	Subharmonic (0.5x) Test Limit (dBc)	Subharmonic (1.5x) Frequency (GHz)	Subharmonic (1.5x) Test Limit (dBc)
3.31	1.655	<-30	4.965	<-20
3.5	1.75		5.25	
3.7	1.85		5.55	
3.9	1.95		5.85	
4.1	2.05		6.15	
4.2	2.10	<-24	6.30	<-23
4.5	2.25		6.75	
4.7	2.35		7.05	
4.9	2.45		7.35	
5.1	2.55		7.65	
5.3	2.65		7.80	
5.5	2.75	8.25		
5.7	2.85	8.55		
5.9	2.95	8.85		
6.1	3.05	<-22	9.15	
6.3	3.15		9.45	
6.5	3.25		9.75	
6.6	3.30		9.90	

10. Repeat steps 3 through 9 for the remaining frequencies in Table 10.

Verifying Nonharmonics at 0 dBm to -20 dBm Output Power

Complete the following steps to verify the nonharmonic levels of an PXIe-5650/5651/5652 module using a spectrum analyzer:

1. Connect the PXIe-5650/5651/5652 REF IN/OUT front panel connector to the rubidium 10 MHz frequency reference signal.
2. Connect the rubidium 10 MHz frequency reference signal to the spectrum analyzer 10 MHz REF IN rear panel connector.

3. Generate a signal after setting the following NI-RFSG property settings:
 - Frequency (Hz): 35.125 MHz
 - Power Level (dBm): 0 dBm
 - Generation Mode: CW
 - Reference Clock source: RefIn
4. Configure the spectrum analyzer with the following settings:
 - Frequency: 35.125 MHz
 - Reference level: +5 dBm
 - Resolution bandwidth: 1 kHz
 - Span: 500 kHz
 - Reference Clock source: External
5. Measure the peak power of the fundamental tone using the spectrum analyzer and record the value. This value is your reference value for steps 6 through 14.
6. Reconfigure the spectrum analyzer with the following settings:
 - Center frequency: 35.125 MHz + 51.5 kHz offset
 - Reference level: +5 dBm
 - Span: 97 kHz
 - Reference Clock source: External
 - Resolution bandwidth: 100 Hz
7. Measure the peak power using the spectrum analyzer with the settings from step 6 and record the value. This value is the highest peak between 3 kHz and 100 kHz offset from the fundamental frequency.
8. Subtract the measurement in step 5 from the measurement in step 7.
9. Verify that the result calculated in step 8 is within the $>3 \text{ kHz Offset}$ limits listed in Table 11.

Table 11. Nonharmonics at ≤ 0 dBm Output Power

RF Output Frequency	Test Limits	
	>3 kHz Offset (dBc)	>100 kHz Offset (dBc)
500 kHz to <50 MHz	<-57	<-57
50 MHz to <3.3 GHz	<-65	<-70
3.3 GHz to <6.6 GHz	<-50	<-65

The following steps measure the nonharmonic levels $freqOffset > 100 \text{ kHz}$ where $freqOffset$ is the frequency offset from the tone being generated.

10. Configure the spectrum analyzer with the following settings:
 - Center frequency: 200 MHz
 - Reference level: +5 dBm

- Resolution bandwidth: 500 Hz
 - Span: 100 kHz
 - Reference Clock source: External
11. Measure the peak power using the spectrum analyzer with the settings from step 10 and record the value.
 12. Subtract the measurement from step 11 from the measurement in step 5.
 13. Verify that the result is within the $>100\text{ kHz}$ *Offset* limits specified in Table 11.
 14. Repeat steps 10 through 13 for the remaining frequencies listed in the *Test Point* column in Table 12.
 15. Repeat steps 3 through 14 using the *Center Frequency* shown in Table 13.

Table 12. Test Points for Nonharmonic Test

Device	Test Point (MHz)
PXIe-5650/5651/5652	200
	400
	600
	800
	1,000
	1,200
PXIe-5651/5652	1,400
	1,600
	1,800
	2,000
	2,200
	2,400
	2,600
	2,800
	3,000
	3,200

Table 12. Test Points for Nonharmonic Test (Continued)

Device	Test Point (MHz)
PXIe-5652	3,400
	3,600
	3,800
	4,000
	4,200
	4,400
	4,600
	4,800
	5,000
	5,200
	5,400
	5,600
	5,800
	6,000
	6,200
6,400	
6,600	

Table 13. Center Frequencies for Nonharmonic Test

Device	Center Frequency (MHz)
PXIe-5650/5651/5652	35.125
	1,235.125
PXIe-5651/5652	3,235.125
PXIe-5652	6,535.125

Adjustment

Following the adjustment procedure automatically updates the calibration date and temperature in the EEPROM of the PXIe-5650/5651/5652.

Adjustment involves the following PXIe-5650/5651/5652 procedures:

- Automatic level control (ALC)
- Attenuators
- ALC limits
- Frequency accuracy



Note Adjustment procedures *must* be performed in the order listed.

Adjusting ALC

This procedure measures the response of the ALC circuit. This response is used to generate accurate power levels at the PXIe-5650/5651/5652 RF OUT front panel connector. Complete the following steps to adjust the ALC of the PXIe-5650/5651/5652 using the power meter thermal sensor:

1. Connect the PXIe-5650/5651/5652 RF OUT front panel connector to the power meter thermal sensor.
2. Call the niRFSG Initialize External Calibration VI.
3. Call the niRFSG 5652 Update ALC Limits Table VI, and set the **update max power spec** parameter to TRUE and the **update other table limits** parameter to FALSE.
4. Call the niRFSG 5652 Initialize ALC Calibration VI, and set the **measurement range** parameter to **Above 10 MHz**.
5. Call the niRFSG 5652 Configure ALC Calibration VI.
6. Use the power meter to measure the RF OUT power at the frequency specified by the **frequency to measure** parameter of the niRFSG 5652 Configure ALC Calibration VI.
7. Call the niRFSG 5652 Adjust ALC Calibration VI, and wire the measured value from step 6 to the **measured RF OUT power** parameter.
8. Repeat steps 5 through 7 until the **ALC calibration complete** parameter of the niRFSG 5652 Adjust ALC Calibration VI returns a value of TRUE.

9. Connect the NI 5650/5651/5652 RF OUT front panel connector to the power meter thermal sensor.
10. Call the niRFSG 5652 Initialize ALC Calibration VI, and set the **measurement range** parameter to **Below 10 MHz**.
11. Call the niRFSG 5652 Configure ALC Calibration VI.
12. Use the power meter to measure the RF OUT power at the frequency specified by the **frequency to measure** parameter of the niRFSG 5652 Configure ALC Calibration VI.
13. Call the niRFSG 5652 Adjust ALC Calibration VI, and wire the measured value from step 12 to the **measured RF OUT power** parameter.
14. Repeat steps 11 through 13 until the **ALC calibration complete** parameter of the niRFSG 5652 Adjust ALC Calibration VI returns a value of TRUE.
15. Call the niRFSG Close External Calibration VI to close the session. Set the **write calibration to hardware?** parameter to TRUE to store the results to the EEPROM on the PXIe-5650/5651/5652.

Adjusting Attenuators

This procedure measures the frequency response of the attenuator circuit. This response is used to generate accurate power levels at the PXIe-5650/5651/5652 RF OUT front panel connector. Complete the following steps to adjust the PXIe-5650/5651/5652 attenuators using a power meter and spectrum analyzer:

1. Connect the PXIe-5650/5651/5652 RF OUT front panel connector to the power meter thermal sensor.
2. Disconnect the PXIe-5650/5651/5652 REF IN/OUT front panel connector from any clock source, if connected.
3. Connect any available rubidium frequency reference rear panel BNC connector to the spectrum analyzer REF IN rear panel connector.
4. Connect any available rubidium frequency reference rear panel BNC connector to the 10 MHz REF IN connector on the back of the PXI Express chassis.
5. Call the niRFSG Initialize External Calibration VI.
6. Call the niRFSG 5652 Initialize Attenuator Calibration VI, and set the **measurement range** parameter to **Above -40 dBm (Below 10 MHz)**.
7. Call the niRFSG 5652 Configure Attenuator Calibration VI.
8. Use the power meter to measure the RF OUT power at the frequency specified by the **frequency to measure** parameter of the niRFSG 5652 Configure Attenuator Calibration VI.
9. Call the niRFSG 5652 Adjust Attenuator Calibration VI, and wire the measured value from step 8 to the **measured RF OUT power** parameter.
10. Repeat steps 7 through 9 until the **attenuator calibration complete** parameter of the niRFSG 5652 Adjust Attenuator Calibration VI returns a value of TRUE.
11. Connect the PXIe-5650/5651/5652 RF OUT front panel connector to the power meter thermal sensor.

12. Call the niRFSG 5652 Initialize Attenuator Calibration VI, and set the **measurement range** parameter to **Above -40 dBm (Above 10 MHz)**.
13. Call the niRFSG 5652 Configure Attenuator Calibration VI.
14. Use the power meter to measure the RF OUT power at the frequency specified by the **frequency to measure** parameter of the niRFSG 5652 Configure Attenuator Calibration VI.
15. Call the niRFSG 5652 Adjust Attenuator Calibration VI, and wire the measured value from step 14 to the **measured RF OUT power** parameter.
16. Repeat steps 13 through 15 until the **attenuator calibration complete** parameter of the niRFSG 5652 Adjust Attenuator Calibration VI returns a value of TRUE.
17. Call the niRFSG 5652 Initialize Attenuator Calibration VI, and set the **measurement range** parameter to **Below -40 dBm**.
18. Call the niRFSG 5652 Configure Attenuator Calibration VI.
19. Use the spectrum analyzer to measure the mean power of the RF output using the following spectrum analyzer settings:
 - Center frequency: Value returned by the **frequency to measure** parameter of the niRFSG 5652 Configure Attenuator Calibration VI
 - Reference level: -38 dBm
 - Frequency span: 0 Hz
 - Resolution bandwidth: 30 Hz
 - Sweep time: 5 ms
 - Reference Clock source: External
20. Add the *Spectrum Analyzer Correction Factor* recorded in the [Characterizing the Spectrum Analyzer](#) section to the power measurement from step 19 at the corresponding frequency.
21. Call the niRFSG 5652 Adjust Attenuator Calibration VI, and wire the measured value from step 20 to the **measured RF OUT power** parameter.
22. Repeat steps 18 through 21 until the **attenuator calibration complete** parameter of the niRFSG 5652 Adjust Attenuator Calibration VI returns a value of TRUE.
23. Call the niRFSG Close External Calibration VI to close the session. Set the **write calibration to hardware?** parameter to TRUE to store the results to the EEPROM on the PXIe-5650/5651/5652.

Adjusting ALC Limits

This procedure updates the ALC limits table of the device based on the results of the ALC and attenuator adjustments. The ALC limits table determines which attenuator and path NI-RFSG uses for each frequency and power combination. Complete the following steps to adjust the ALC limits table of the PXIe-5650/5651/5652:

1. Call the niRFSG Initialize External Calibration VI.
2. Call the niRFSG 5652 Update ALC Limits Table VI, and set the **update max power spec** parameter to FALSE and the **update other table limits** parameter to TRUE.

3. Call the niRFSG Close External Calibration VI to close the session. Set the **write calibration to hardware?** parameter to TRUE to store the results to the EEPROM on the PXIe-5650/5651/5652.

Adjusting Frequency Accuracy

This adjustment yields a more accurately tuned VCO frequency. Complete the following steps to adjust the frequency accuracy of the PXIe-5650/5651/5652 using a spectrum analyzer:

1. Connect the 6 dB precision attenuator to the PXIe-5650/5651/5652 RF OUT front panel connector.
2. Connect the spectrum analyzer RF INPUT connector to the 6 dB precision attenuator.
3. Connect any available rubidium frequency reference rear panel BNC connector to the spectrum analyzer REF IN rear panel connector.
4. Configure the spectrum analyzer with the following settings:
 - Reference Clock source: External
 - Reference level: 10 dBm
 - Center frequency: 400 MHz
5. Call the niRFSG Initialize External Calibration VI.
6. Call the niRFSG 5652 Initialize Reference Clock Calibration VI.
7. Call the niRFSG 5652 Configure Reference Clock Calibration VI.
8. Use the spectrum analyzer to measure the peak power using the following spectrum analyzer settings:
 - Frequency span: Value returned by the **frequency span** parameter of the niRFSG 5652 Configure Reference Clock Calibration VI
 - Center frequency: Value returned by the **center frequency** parameter of the niRFSG 5652 Configure Reference Clock Calibration VI
9. Use the spectrum analyzer frequency counter to measure the frequency of the peak.
10. Call the niRFSG 5652 Adjust Reference Clock Calibration VI. Wire the measured value from step 8 to the **measured REF OUT power** parameter and pass the measured value from step 9 to the **measured REF OUT frequency** parameter.
11. Repeat steps 7 through 10 until the **reference clock calibration complete** parameter of the niRFSG 5652 Adjust Reference Clock Calibration VI returns a value of TRUE.
12. Call the niRFSG Close External Calibration VI to close the session. Set the **write calibration to hardware?** parameter to TRUE to store the results to the EEPROM on the PXIe-5650/5651/5652.

You have finished adjusting the PXIe-5650/5651/5652. Repeat the *Verification* section to reverify the performance of the PXIe-5650/5651/5652 after adjustments.

Updating Calibration Date and Time

This procedure updates the date and time of the last calibration of the PXIe-5650/5651/5652.

1. Call the niRFSG Initialize External Calibration VI.

2. Call the niRFSG Update External Calibration Date and Time VI.
3. Call the niRFSG Close External Calibration VI to close the session. Set the **write calibration to hardware?** parameter to TRUE to store the results to the EEPROM on the PXIe-5650/5651/5652.

Appendix A: Calibration Utilities

NI-RFSG provides a full complement of external calibration VIs. You can use these VIs to retrieve information about adjustments performed on the PXIe-5650/5651/5652. The External Calibration palette includes the following VIs:

- niRFSG Initialize External Calibration VI
- niRFSG Get External Calibration Last Date And Time VI
- niRFSG Change External Calibration Password
- niRFSG Update External Calibration Date and Time VI
- niRFSG Close External Calibration VI

Calibration VI References

The VIs used in this procedure, including all calibration VIs, are documented in the *NI-RFSG VI Reference*, which you can access from the *NI RF Signal Generators Help* at **Start»All Programs»National Instruments»NI-RFSG»Documentation**.

NI Services

Visit ni.com/support to find support resources including documentation, downloads, and troubleshooting and application development self-help such as tutorials and examples.

Visit ni.com/services to learn about NI service offerings such as calibration options, repair, and replacement.

Visit ni.com/register to register your NI product. Product registration facilitates technical support and ensures that you receive important information updates from NI.

NI corporate headquarters is located at 11500 North Mopac Expressway, Austin, Texas, 78759-3504, USA.

Information is subject to change without notice. Refer to the *NI Trademarks and Logo Guidelines* at ni.com/trademarks for more information on NI trademarks. Other product and company names mentioned herein are trademarks or trade names of their respective companies. For patents covering NI products/technology, refer to the appropriate location: **Help»Patents** in your software, the `patents.txt` file on your media, or the *National Instruments Patents Notice* at ni.com/patents. You can find information about end-user license agreements (EULAs) and third-party legal notices in the `readme` file for your NI product. Refer to the *Export Compliance Information* at ni.com/legal/export-compliance for the NI global trade compliance policy and how to obtain relevant HTS codes, ECCNs, and other import/export data. NI MAKES NO EXPRESS OR IMPLIED WARRANTIES AS TO THE ACCURACY OF THE INFORMATION CONTAINED HEREIN AND SHALL NOT BE LIABLE FOR ANY ERRORS. U.S. Government Customers: The data contained in this manual was developed at private expense and is subject to the applicable limited rights and restricted data rights as set forth in FAR 52.227-14, DFAR 252.227-7014, and DFAR 252.227-7015.

© 2009–2020 National Instruments Corporation. All rights reserved.